

March 2012

Who Is Your Advisor?
Big Supply Chain Event
Poll
Bricks & Dirt



Who Is Your Advisor?

We want to be your real estate advisor:

- Team approach
- Evaluating your footprint
- Teeing up multiple opportunities
- Lease or purchase
- Short term & long term solutions
- Providing options for you to assess
- Exit strategies
- Proven track record



Big Supply Chain Event

Huge Day For Supply Chain & Logistics In Chicago
The Chicago CSCMP Spring Seminar
April 12, 2012

- Chicago's own Andy Shaw to keynote the event
- Speakers at the event include:

US Foods	Coyote Logistics
RR Donnelley	Arrowstream
Organic Logistics	Boise
Goodrich	

For more information, go to www.cscmpchicago.org



Council of Supply Chain Management Professionals

CONTACT

The Modal Group
1016 W. Jackson Blvd
Chicago, IL 60607
773.260.0200

Illinois Licensed Real Estate Broker
2010, 2011 Industrial Transaction of the Year nominee



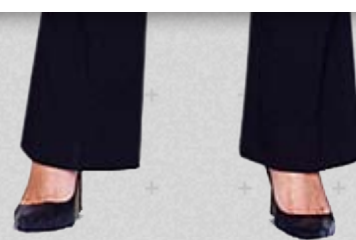
ABOUT US

WE HELP YOU FIND:

- DISTRIBUTION CENTERS
- WAREHOUSE SPACE
- REGIONAL OFFICE & FLEX SPACE
- CONTAINER YARDS
- CORPORATE HEADQUARTERS

SERVICES WE OFFER:

- SITE SELECTION
- LEASE RENEWALS
- GOVERNMENT INCENTIVES



UPCOMING EVENTS

Spring Seminar



One-day Conference
Oakbrook, IL

www.cscmpchicago.org

NARS conference



Three-day Conference
Chicago, IL

www.railshipper.com

CSCMP Chicago Golf Outing



Prairie Landing Golf Club

www.cscmpchicago.org

POLL

Have you ever looked into what government incentives are available for your company?

[Yes](#) [No](#)

BRICKS & DIRT EDITORIAL

IN THE KNOW WITH DSmo
Get ready for opening day.
www.mlb.com

REUBEN'S WORLD
How 'Hunger Games' Built Up Must-See Fever
[click for more information](#)



Watch our latest video
www.modalgroup.com